

QSFP

Fibre Channel / 10 Gigabit Ethernet / InfiniBand / SAS

Copper Assembly

Amphenol QSFP copper cable assemblies are a high performance, cost effective interconnect solutions supporting Ethernet, Fibre Channel, InfiniBand, SAS, and SONET/SDH applications. QSFP copper modules provide a high density, high bandwidth solution at very low cost and reduced power budget. Amphenol's high speed cable assemblies meet and exceed industry standards for performance and reliability.

Interface

- > 38 position board-as-connector

Cable Options

- > 8-pair 26 - 30 AWG
- > Amphenol Spectra-Strip SkewClear®
- > Amphenol Spectra-Strip SkewClear® EXD

Key Features

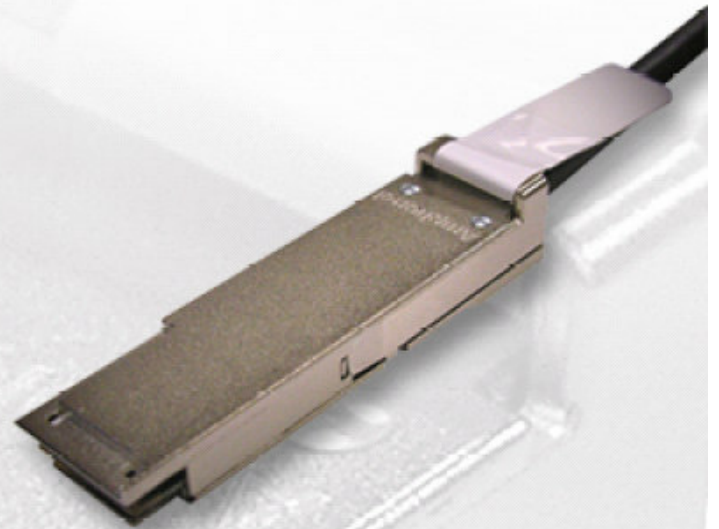
- > Four channels transmit and receive
- > 100Mbps to 10Gbps per channel capacity
- > Copper link length up to 20m
- > 3X Port density over SFP
- > Precision process control for minimization of pair-to-pair skew
- > Low crosstalk
- > Pull-to-release latch
- > Compliant to QSFP MSA

Applications

- > Fibre Channel
- > InfiniBand, DDR, QDR
- > 10/40Gb Ethernet
- > Switches, Routers, and HBA's
- > Enterprise Data Center
- > High Performance Computing (HPC) & Storage

Complimentary Products

- > QSFP limiting amplified copper cables
- > QSFP short range optical modules



www.CablesOnDemand.com