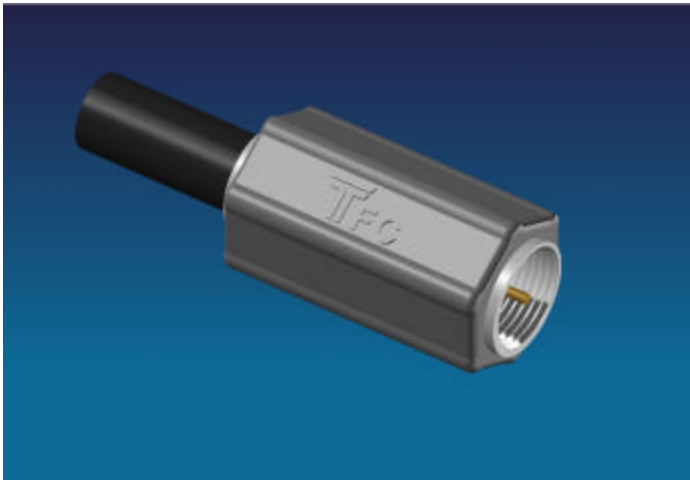


QuickConnect Coaxial Cable Assemblies

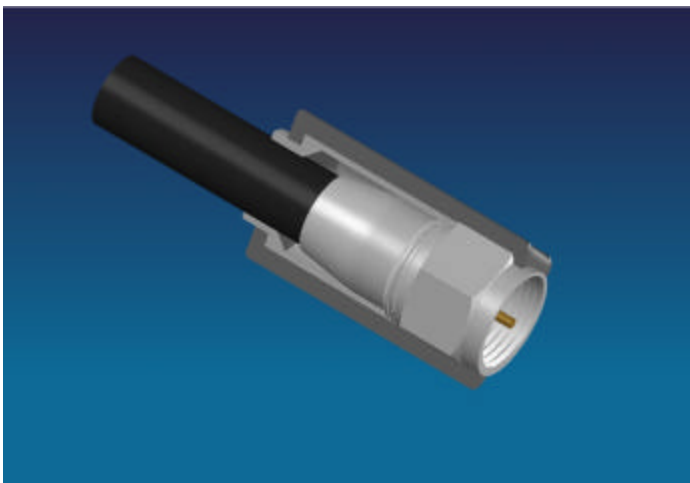
New from Times Fiber...

- *Ergonomically-designed connector solution*
- *Fixed overmolded design*
- *Integral back sleeve enhancing mechanical integrity*
- *Hexagonal shape improving consumer friendliness and insuring proper seating*
- *Customizable for end user logos or text*



A fixed and permanent installation, the QuickConnect system insures that it is used in a customer self-install and eliminates the possibility of small parts choking or ingestion.

The hexagonal shape is easily gripped by the consumer in the limited spaces around electronic equipment and provides a high torque to insure proper connections.



By providing an extra measure of support at the rear section of the connector, the sleeve adds stability to the cable/connector interface in cases where the assembly is mechanically stressed, e.g. at exposed wall plates, cable modem, or directional coupler whereby tripping hazards exist and the assembly can be placed under tension.

Customers are reminded that they are SOLELY responsible for confirming that all products are properly installed and used in accordance with all applicable codes and regulations.